

# SOLUTIONS TO INTEGRATE

CAD  ERP

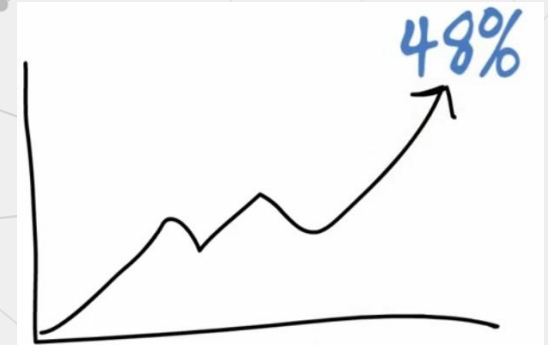
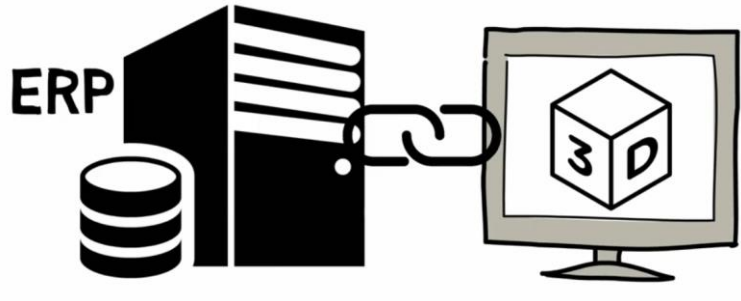
ZWSOFT

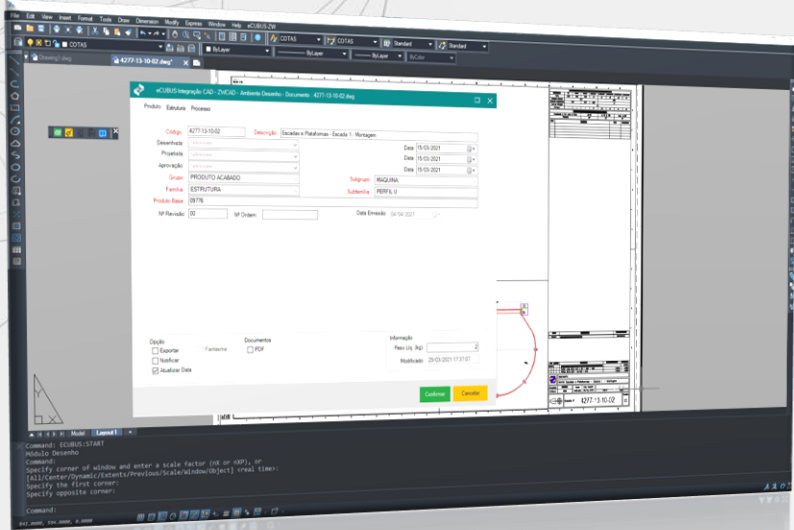


# ENGINEERING 4.0

Much has been said about Industry 4.0, with a focus on automation and cost reduction on the factory floor.

Cubus Soluções is a company specialized in offering automation for the Engineering and Project areas!





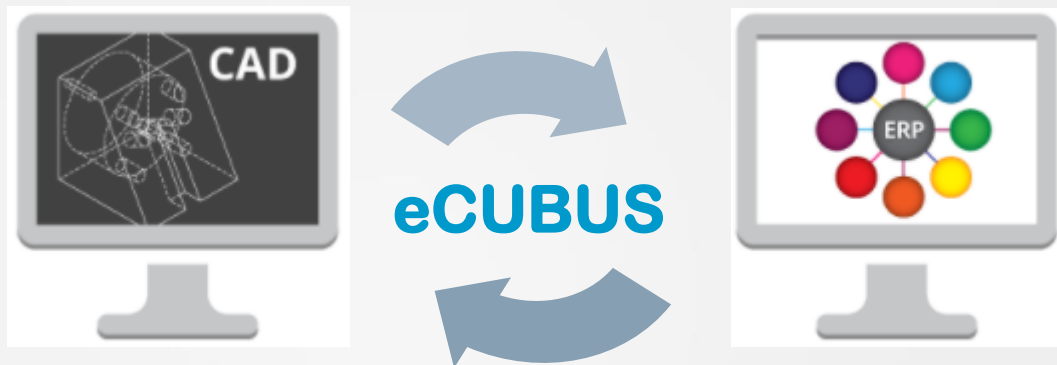
# INTEGRATE YOUR CAD TO ERP

## BIDIRECTIONAL AND REAL-TIME INTEGRATION

Increase productivity, bill of material data accuracy and cost savings. With two-way real-time integration between the engineering project and its management system, your company benefits from design, with fully synchronized information.



# HOW INTEGRATION WORKS



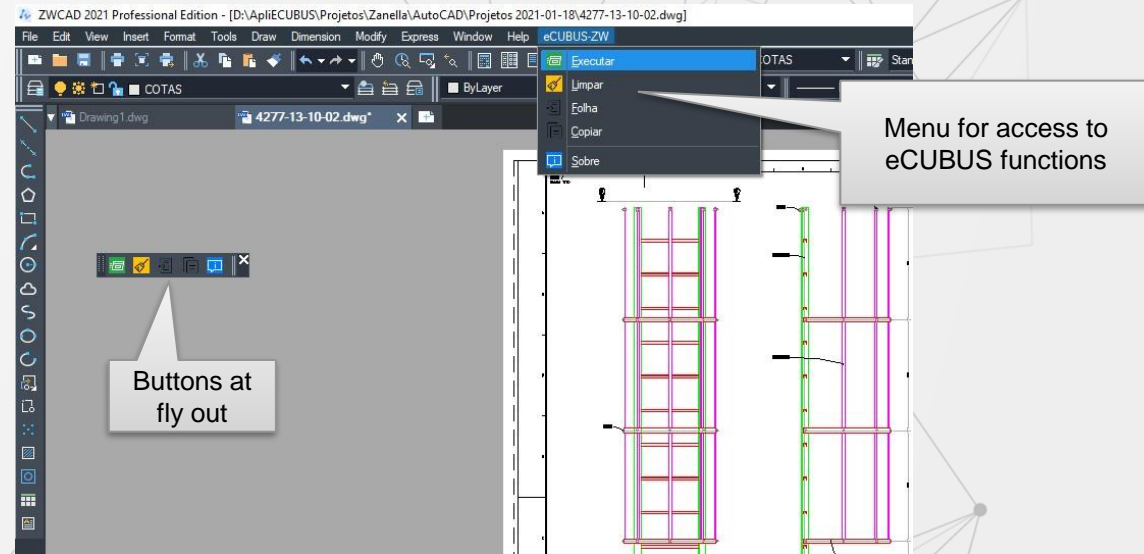
They are applications developed for CAD, the designer's work environment.

These applications allow communication directly to the ERP information.

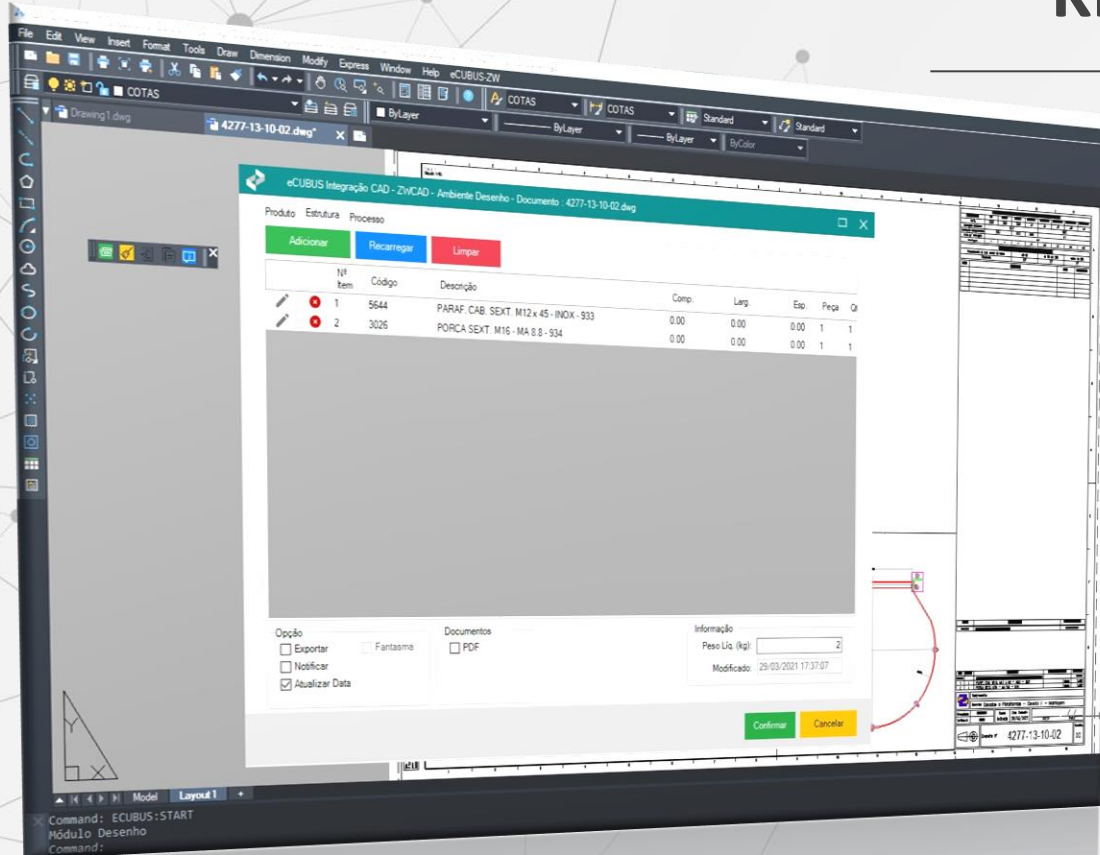


# KNOW A LITTLE MORE

Through API (Application Programming Interface), commands are added to the CAD, which will allow access to eCUBUS functions



# KNOW A LITTLE MORE



With a clean and easy to use interface, the eCUBUS Integrator automatically communicates with the ERP system

# ADVANTAGES OF CAD ↔ ERP INTEGRATION

---



Reduced design  
time



Interactive, easy  
to use



Reduced typing  
errors



Standardization  
projects



Synchronized  
information



Real-time  
information

# SOME CUSTOMERS

---

MORE THAN 100 CUSTOMERS  
WORK WITH eCUBUS



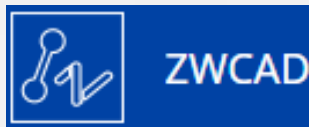


# ZWSOFT PARTNER

---



**ZWSOFT**



Click on this link to see a demonstration movie:



# CONNECTED ERP SYSTEMS



Contact us for other ERP systems





# THANK YOU



Contact us at:

[engenharia@cubussolucoes.com.br](mailto:engenharia@cubussolucoes.com.br)  
+55 47 99740-4097 (WhatsApp)  
[www.cubussolucoes.com.br](http://www.cubussolucoes.com.br)



**CUBUS**  
SOLUÇÕES

April / 2021